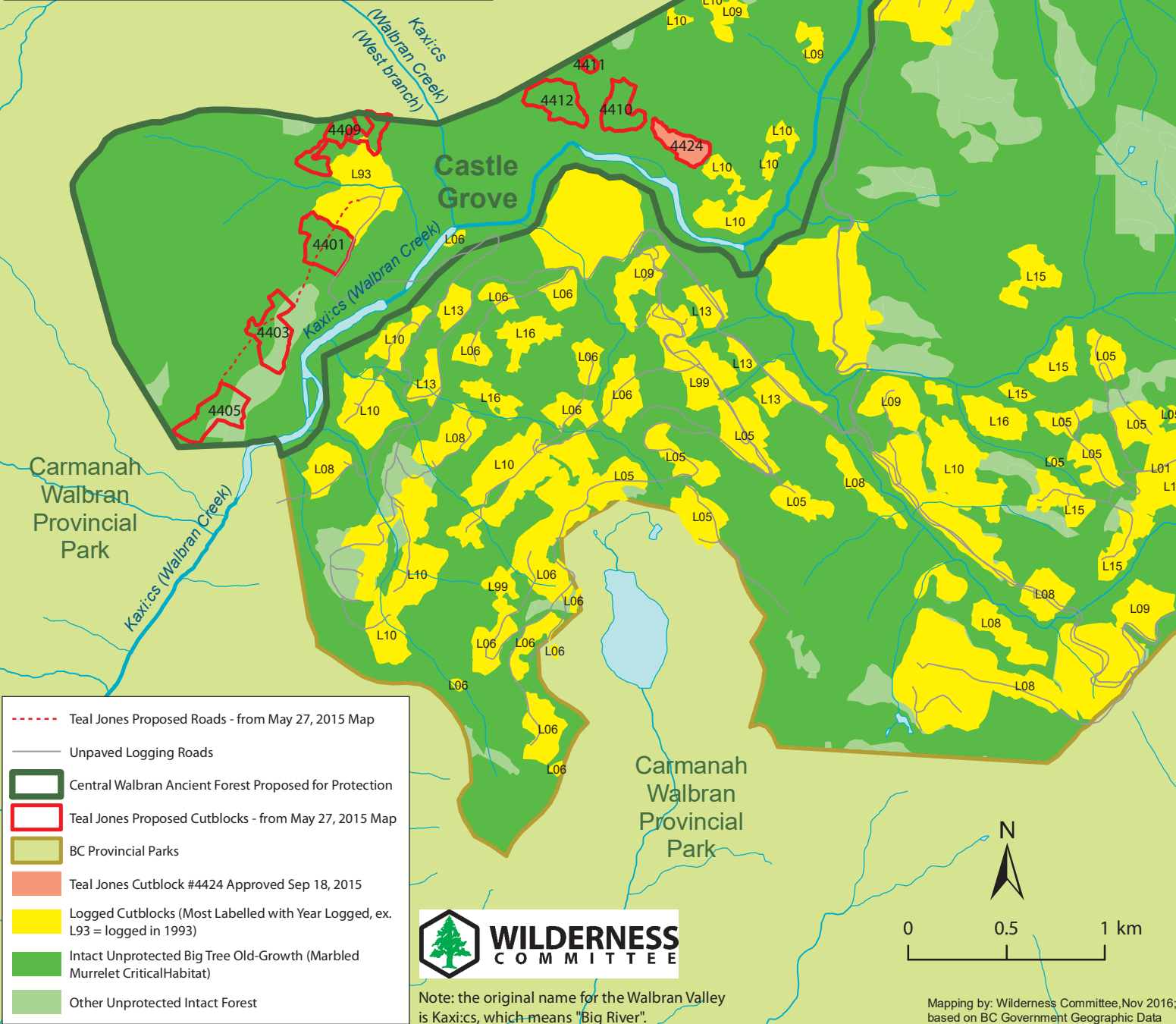


Locator Map Inset



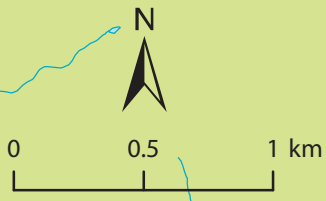
Intact and Threatened Areas in the Central Walbran Valley (Unceded Nuu-chah-nulth Territories)



- - - - Teal Jones Proposed Roads - from May 27, 2015 Map
- Unpaved Logging Roads
- Central Walbran Ancient Forest Proposed for Protection
- Teal Jones Proposed Cutblocks - from May 27, 2015 Map
- BC Provincial Parks
- Teal Jones Cutblock #4424 Approved Sep 18, 2015
- Logged Cutblocks (Most Labelled with Year Logged, ex. L93 = logged in 1993)
- Intact Unprotected Big Tree Old-Growth (Marbled Murrelet CriticalHabitat)
- Other Unprotected Intact Forest



Note: the original name for the Walbran Valley is Kaxi:cs, which means "Big River".



Mapping by: Wilderness Committee, Nov 2016; based on BC Government Geographic Data