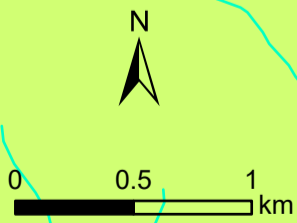
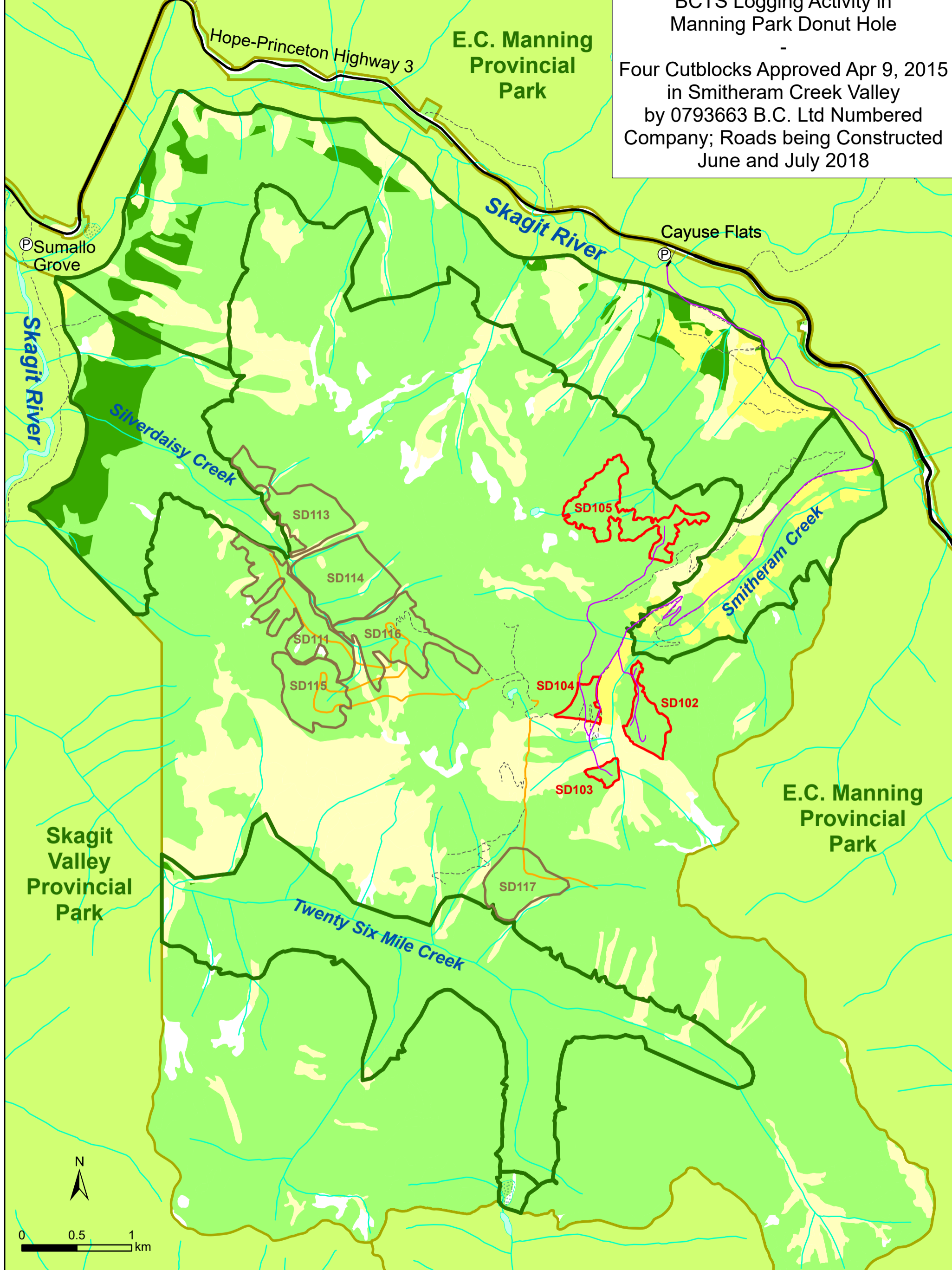


BCTS Logging Activity in Manning Park Donut Hole

Four Cutblocks Approved Apr 9, 2015 in Smitheram Creek Valley by 0793663 B.C. Ltd Numbered Company; Roads being Constructed June and July 2018



- |  |   |
|--|---|
| <ul style="list-style-type: none"> <li><span style="color: purple;">—</span> New and Existing Upgraded Logging Roads - being cleared June and July 2018</li> <li><span style="color: orange;">—</span> Information Roads (future planned)</li> <li><span style="color: black;">—</span> major - paved roads</li> <li><span style="color: grey;">- - - -</span> minor - past/old unpaved roads (many overgrown or now trails)</li> <li>Cutblock Status - labelled with cutblock ID</li> <li><span style="border: 1px solid red; display: inline-block; width: 10px; height: 10px;"></span> Approved</li> <li><span style="border: 1px solid brown; display: inline-block; width: 10px; height: 10px;"></span> Information (future planned)</li> </ul> | <ul style="list-style-type: none"> <li><span style="border: 1px solid green; display: inline-block; width: 10px; height: 10px;"></span> Spotted Owl Wildlife Habitat Area - Long Term Owl Habitat Areas - strong protection</li> <li><span style="background-color: yellow; border: 1px solid black; display: inline-block; width: 10px; height: 10px;"></span> BC Provincial Parks</li> <li><span style="background-color: darkgreen; border: 1px solid black; display: inline-block; width: 10px; height: 10px;"></span> Spotted Owl Habitat outside of parks - high quality</li> <li><span style="background-color: lightgreen; border: 1px solid black; display: inline-block; width: 10px; height: 10px;"></span> Other Mature and Old-Growth Forest, outside parks</li> <li><span style="background-color: yellow; border: 1px solid black; display: inline-block; width: 10px; height: 10px;"></span> Logged in past</li> <li><span style="background-color: lightyellow; border: 1px solid black; display: inline-block; width: 10px; height: 10px;"></span> Young Forest and Non-Forest Areas</li> <li>Non-Vegetated areas (Rock, Snow, etc. - white areas)</li> </ul> |
|--|---|

Mapping by:  
Wilderness Committee,  
Oct 2015;  
Updated July 12, 2018

